

TOWN OF TOWNSEND

AMENDMENT TO ORDINANCE NO. 1-97

**A sole ordinance to regulate boating upon the water of the Town of Townsend,
County of Oconto, Wisconsin**

Section 1

(b) Restriction

Slow-No-Wake

No person shall operate a boat faster than slow-no-wake in the water of Townsend Flowage at any time.

No person may operate a boat or personal watercraft faster than slow-no-wake in the designated areas, bays, or zones of Townsend Flowage, Upper Wheeler Pont (Townsend Flowage, Upper Reservoir Pond, Lower Reservoir Pond and Archibald Lake that are clearly marked and identified by slow no-wake waterway markers using GPS coordinates. The following Waterway Marker Buoys will be placed at intervals that accommodate boating traffic and are in line of sight of each other.

Townsend Flowage

(Upper Wheeler Pond North of Nicolet Road)

Buoy #10 Latitude N 45 316 143

Buoy #11 Latitude N45 316 972

Townsend Flowage Protection District

Longitude 88 609 956

Longitude 88 608 734

X 

Monica Zeller
Chairperson

X 

Charles DeMoulin
Supervisor

X 

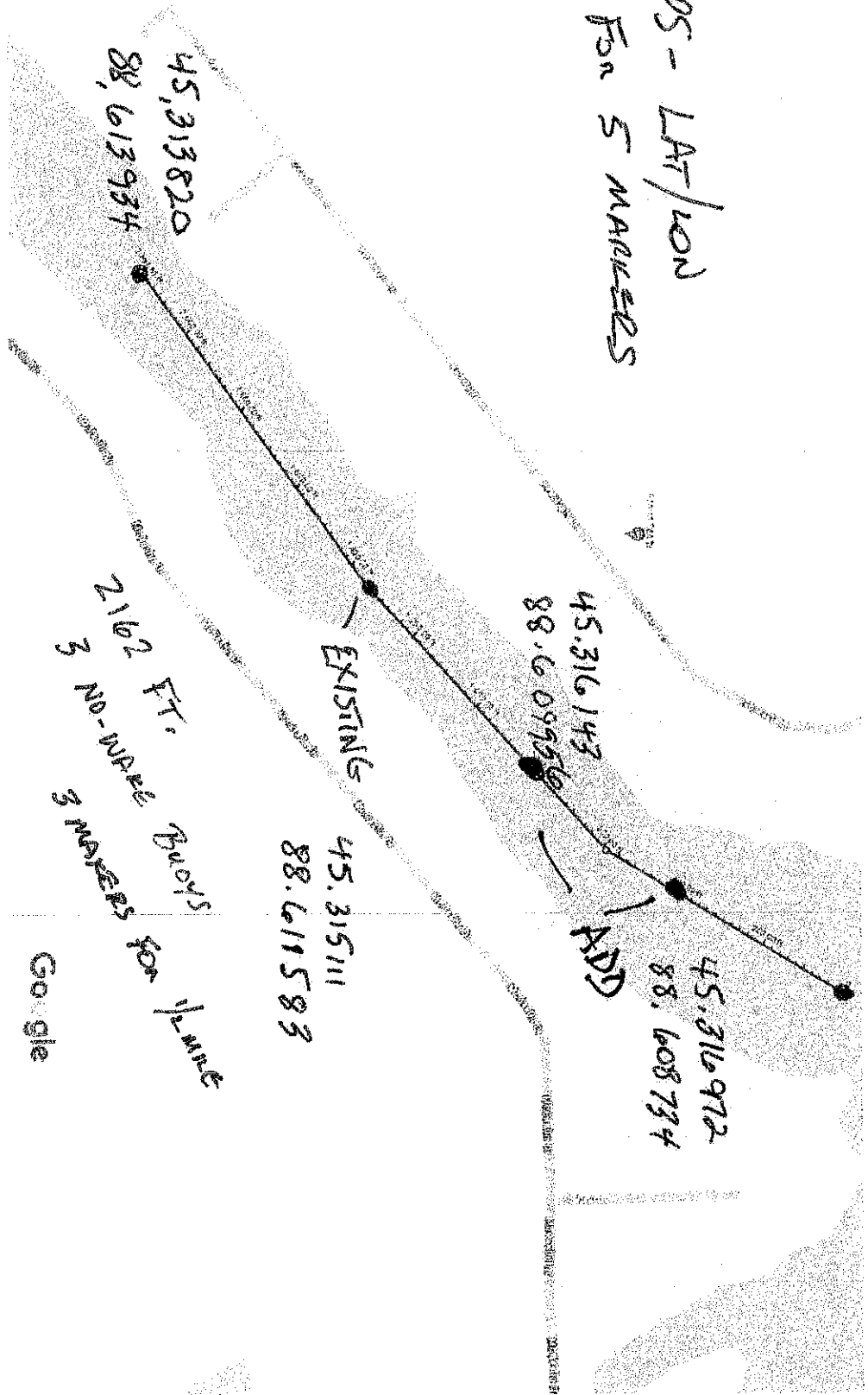
Willis Evans
Supervisor

X 

Linda Ziegler
Clerk

Passed on this 9 day of April, 2024

GPS - LAT/LON
FOR 5 MARKERS



Google

Map data ©2023 Google 100 ft

